

Replacing the fuse in a STELR multimeter

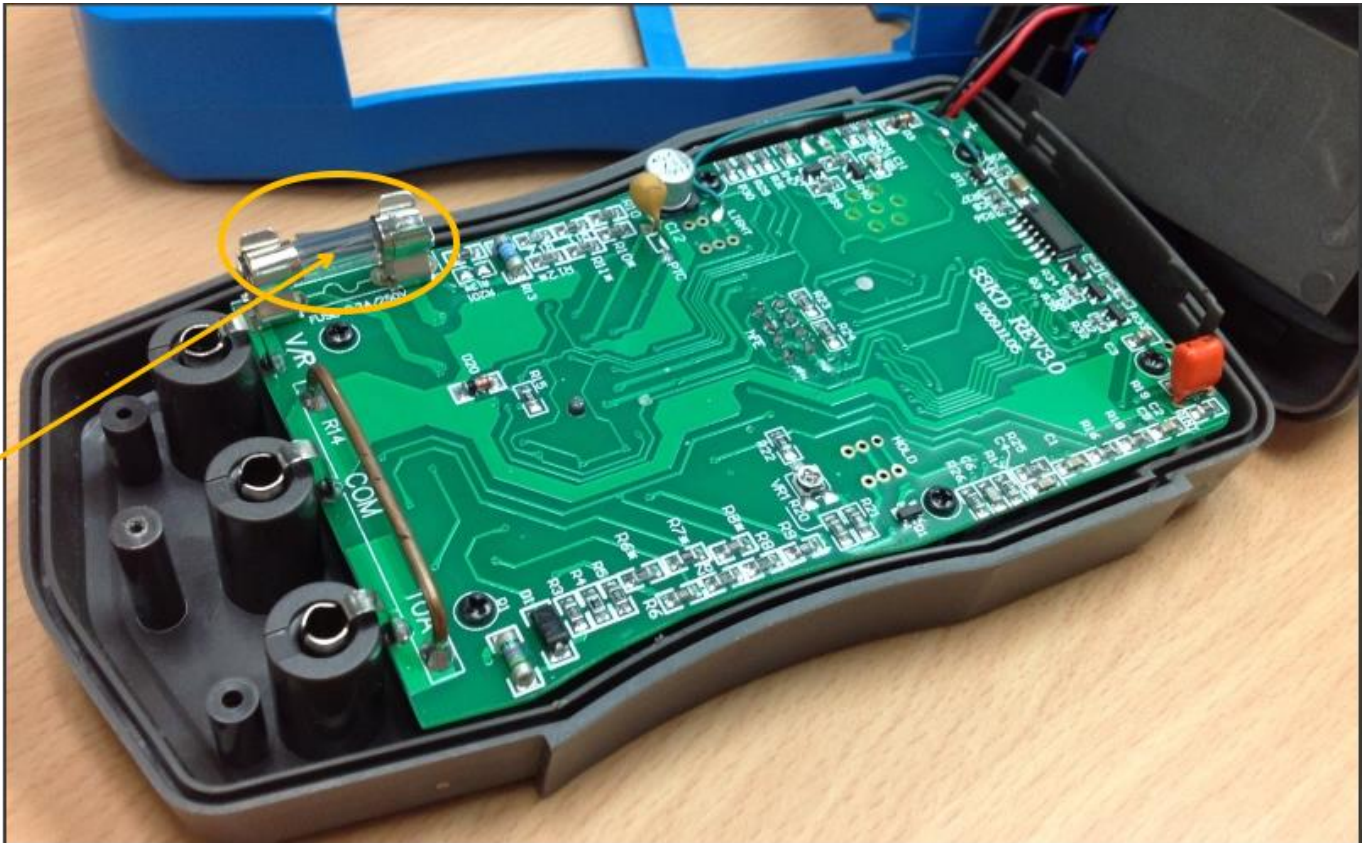
There should be a small zip lock bag of fuses in the Teacher kit.

Remove the blue cover (the plastic can be a bit stiff at first)





Undo bottom screw
Remove back cover



Replace fuse

If you think the current will be greater than 200 mA, or if you are not sure,

- connect the red lead to the 10A socket,
- connect the black lead to the COM socket
- set the dial to 10A

If the current is less than 0.2A

- connect the red lead to the V Ω mA socket,
- set the dial to 200 m

