

## Replacing the fuse in a STELR multimeter

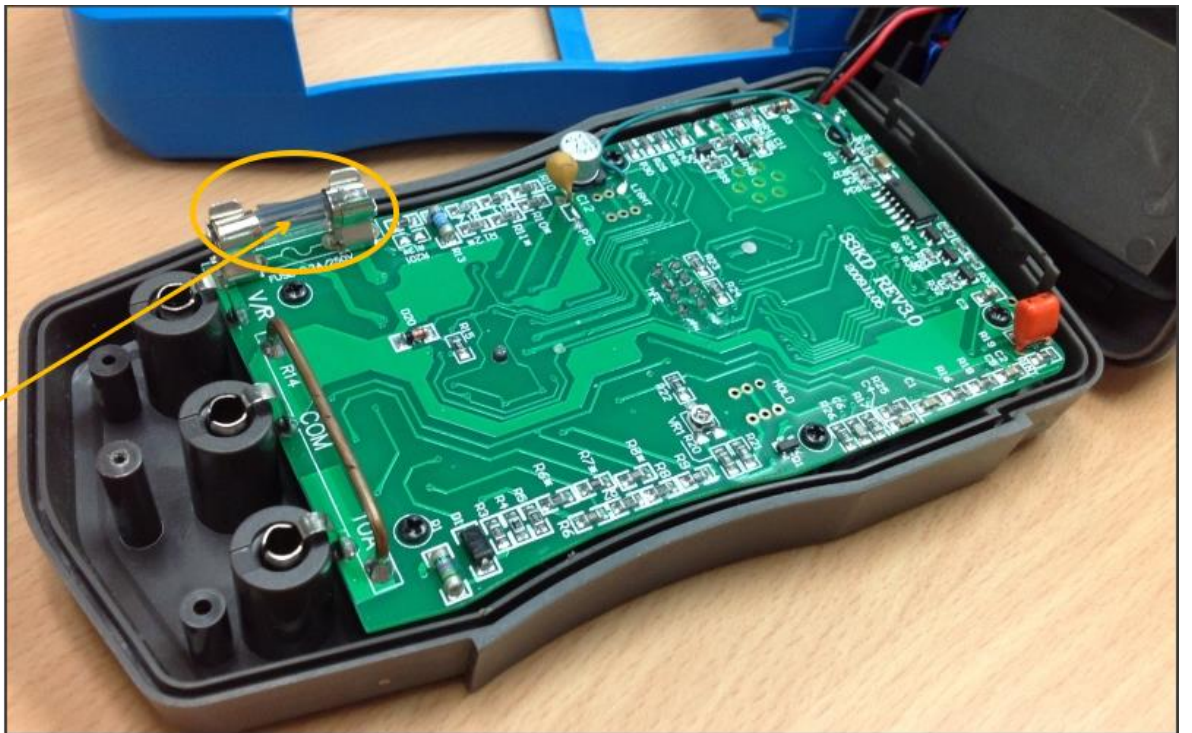
There are spare fuses (F-500mA/250V) in the Renewable Energy Teacher kit. Make sure that the multimeter is turned off and all leads have been disconnected.

Remove the blue cover (the plastic can be a bit stiff at first)





Undo bottom screw  
Remove back cover



Replace fuse

Be careful not to dislodge the black and red wires. Replace the covers.